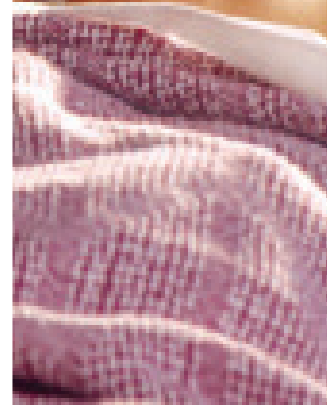


TECHNOLOGY DESIGNED FOR

Long-Term Care



BERNOULLI®TLC

Long-Term Acute Care (LTAC) facilities are a critical part in the continuum of post-acute care following hospitalization. LTAC facilities are frequently challenged with understanding and responding to complex medical problems, while striving to provide the highest level of patient care.

For this demanding environment, Bernoulli TLC offers a solution that provides the ability to centrally monitor patients on ventilators and pulse oximeters, and deliver remote alarm notifications to the appropriate caregiver. Remote patient monitoring can meet an important need of long term, acutely ill patients by improving recognition and response to changes in their respiratory status.

With Bernoulli TLC, clinicians can more quickly and easily respond to alarms and a patient's changing condition. More timely interventions may help reduce preventable patient mortality and morbidity.

BERNOULLI® TLC

TECHNOLOGY FOR LONG-TERM CARE



Overview

Bernoulli TLC is an effective solution for LTAC facilities to centrally manage patients connected to invasive or non-invasive ventilators, and pulse oximeters.

The Bernoulli TLC System receives patient respiratory data such as ventilation, oxygen levels, and pulse rates, along with device settings and alarms. When these measurements fall out of facility-specified ranges, the system issues an alarm that can be displayed on a central station and forwarded to the notification system of a designated clinician. The result is a safer environment for patients and quicker response times to changes in a patient's respiratory status.

Bernoulli TLC provides alarm management, which mitigates false alarms by enabling customization of alarm notifications and escalation, according to unit defined priorities. The notification component of the system allows for rapid notification of alarms and vital patient data which can significantly improve the clinical staffs' response time. Comprehensive alarm messages include patient name, room number, the text message concerning the alert, as well as the patient's values.

In addition to providing real-time data and alarms, the system generates Flowsheets, Snapshots, Trends and event logs for reporting and clinical decision support.

Bernoulli has FDA-510(k) clearance for use in clinical settings.

Advanced Ventilator Monitoring

- Compatible with most ventilators
- Centralizes respiratory monitoring
- Device and measurement alarms
- Automates JCAHO-mandated vent checks
- Primary and secondary alarm notification
- Reports include alarm and event logs, trends
- Reports include device settings and changes

Remote Pulse Oximetry Monitoring

- Compatible with most pulse oximetry monitors
- Real-time surveillance of SpO2% and Pulse Rate values
- High/Low Saturation, and High/Low Pulse Rate alarms
- Device alarms including sensor disconnect and battery low
- Primary and secondary alarm notification
- Reports include alarm and event logs, trends
- Reports include device settings and changes



Make contact with your local CPC Long-Term Acute Care sales representative at 1-800-337-9936, to discuss the value of Bernoulli.

For more information on Bernoulli, visit www.cardiopulmonarycorp.com.

Bernoulli® is a US registered trademark of Cardiopulmonary Corp.
©2009 Cardiopulmonary Corp. All Rights Reserved.
CPCTLC.o809.v1



CARDIOPULMONARY CORP.

200 Cascade Blvd.
Milford, CT 06460
(203) 877-1999; Fax: (203) 877-3401
(800) 337-9936
www.cardiopulmonarycorp.com